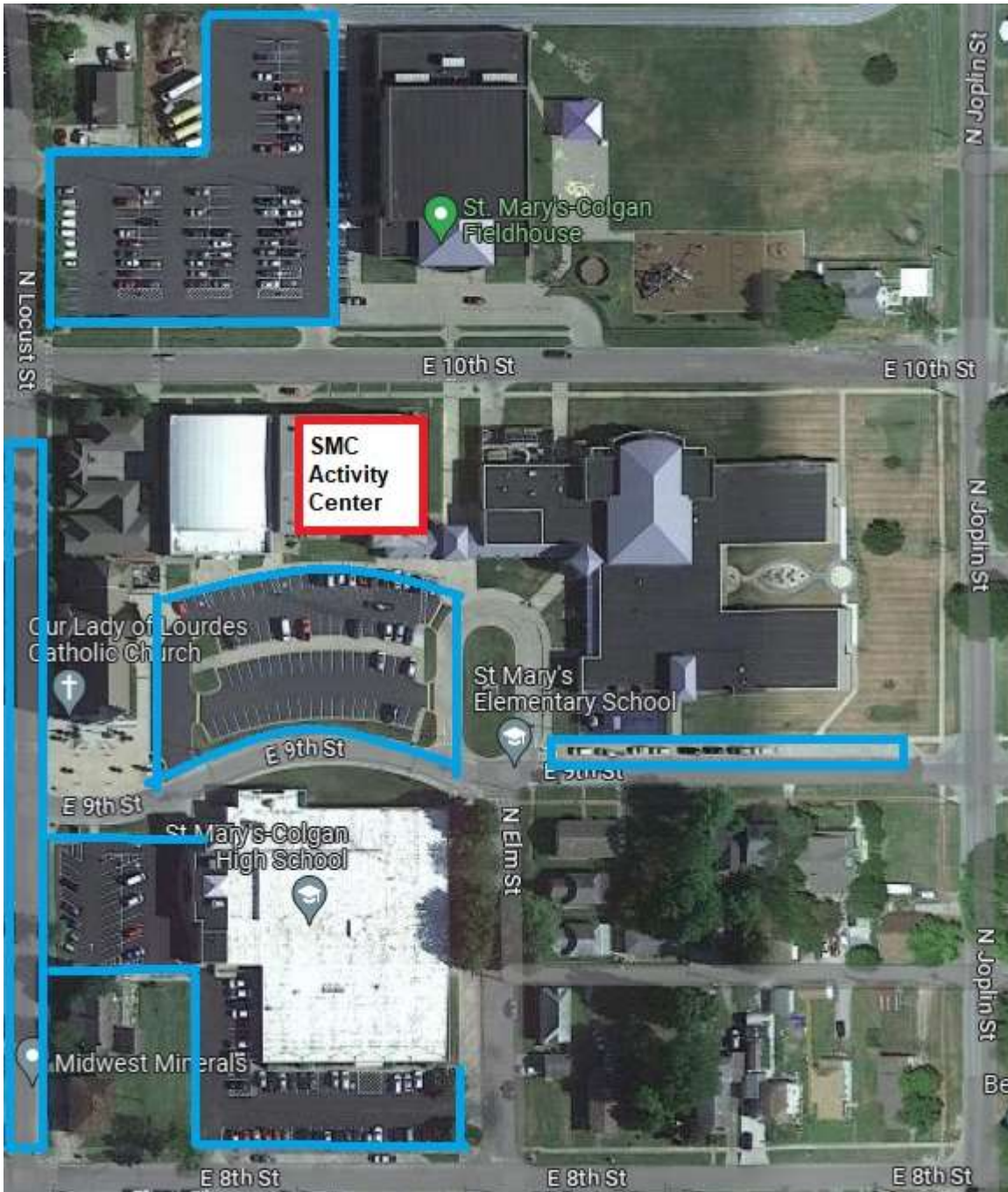


**JAPAN KARATE-DO GENBU-KAI OF PITTSBURG, KS 422 N. BROADWAY**  
**PARKING AVAILABLE ON THE STREET TO THE NORTH, WEST, AND EAST PARKING LOT**  
**NO PARKING IN THE KTCCU DRIVE-THRU BEFORE 6:00PM. KEEP THE EAST ATM LANE OPEN.**



**SMC COLGAN FIELDHOUSE  
285 E 10<sup>TH</sup> ST**

**SATURDAY:  
PARKING AVAILABLE IN THE NORTH PARKING LOT BY THE FIELDHOUSE AND  
ON THE STREET TO THE WEST AND SOUTH PARKING LOTS**

**SUNDAY:  
PARKING AVAILABLE IN THE NORTH PARKING LOT BY THE FIELDHOUSE  
AS MUCH AS POSSIBLE PLEASE LEAVE THE STREET AND SOUTH LOTS OPEN FOR CHURCH**



**LINCOLN CENTER 710 W 9<sup>TH</sup> ST  
PARKING AVAILABLE ON EAST SIDE. HANDICAP PARKING ON THE WEST SIDE.**